

DC-7



Mindray
DC-7
Diagnostic
Ultrasound
System

Redefining
the standard
of value and
performance

A new standard of performance and value in diagnostic ultrasound imaging.

DC-7

Diagnostic Ultrasound System

The Mindray DC-7 delivers a new standard in performance and value. It provides physicians the most cost effective solution to perform premium quality ultrasound imaging in a variety of examination and care environments.



Abdomen



Gynecology



Obstetrics



Real-time 4D Imaging

Exceptional performance in a broad range of applications

- Abdomen, cardiology, gynecology, obstetrics, small parts, vascular, urology and pediatrics

Premium imaging platform technologies

- Real-time 4D imaging
- Power and Directional Color Doppler
- Tissue Doppler imaging
- Tissue harmonic imaging
- IMT: intima-media thickness
- Free Xros M: anatomical M mode
- Steered scanning B, color/power, PW/CW independent
- Trapezoid imaging
- iScape: panoramic imaging
- iBeam™: spatial compounding imaging
- Frequency compounding imaging
- iClear™: adaptive speckle suppression imaging
- iTouch: one-key optimization for B, PW/CW images
- iStation™: on board data management and connectivity
- DICOM networking



The DC-7 is equipped with premium system technologies, enabling you to make confident diagnoses – even in the most challenging examinations.

The system's user-friendly, ergonomic features assist clinicians in performing studies with enhanced user comfort.

The DC-7 is designed to achieve a high return on investment for clinicians and other healthcare providers. We believe it is truly the best investment choice to meet your ultrasound imaging needs.



Excellent productivity

System productivity features:

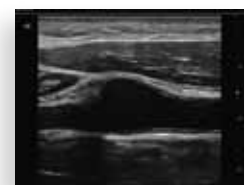
- Fast system response
- Streamlined workflow, simple operation
- Multi-frequency Imaging transducers
- Four active transducer ports
- On board patient data management and network workstation
- DICOM Store, Print, Worklist, Performed Procedure Step and Structural Reporting
- Upgradability

User productivity features:

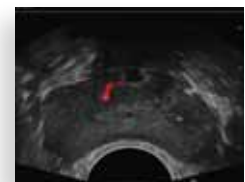
- High resolution LCD display on omni-directional articulated arm
- Home base user interface
- Ergonomic and lightweight transducers
- iTouch: one-key optimization for B, PW/CW images
- Multifunctional control
- Best Pan and Spot combination ZOOM to visualize small anatomic structures
- User programmable pre-sets for clinical specialties, patient types
- User programmable measurement, calculation and operator preferences



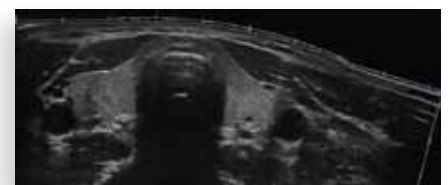
Cardiology



Peripheral Vessel



Endo-cavity Imaging – Prostate



iScape: Panoramic Imaging



Proceed with confidence.

Mindray was founded in 1991 with a mission to deliver high quality, competitively priced medical devices and, by doing so, make healthcare more accessible and affordable around the world.

Our North America headquarters, located in Mahwah, NJ, is dedicated to providing outstanding service and support to our customers and business partners in the United States and Canada. The Mindray Research and Development team, located in Seattle, WA, enables us to design products to better meet the needs of our North American customers. Our company offers a broad range of medical solutions to clinicians including patient monitoring and life support, in-vitro diagnostics and medical imaging.

Unlike other ultrasound products that are assembled from outsourced components, 95 percent of the components in Mindray products are manufactured directly by our company. This enhances quality control, speeds time-to-market and reduces manufacturing and transportation costs. These capabilities enable Mindray to provide clinicians with practical, high-quality solutions and outstanding value. Mindray is committed to engaging in active partnerships with our customers to ultimately deliver better patient care and lower healthcare costs.

Mindray DS USA, Inc.
800 MacArthur Blvd., Mahwah, NJ USA 07430
Tel: 1.800.288.2121 or 201.995.8000
Fax: 1.800.926.4275
www.mindray.com



Mindray DS USA, Inc.
U.S. headquarters in Mahwah, NJ